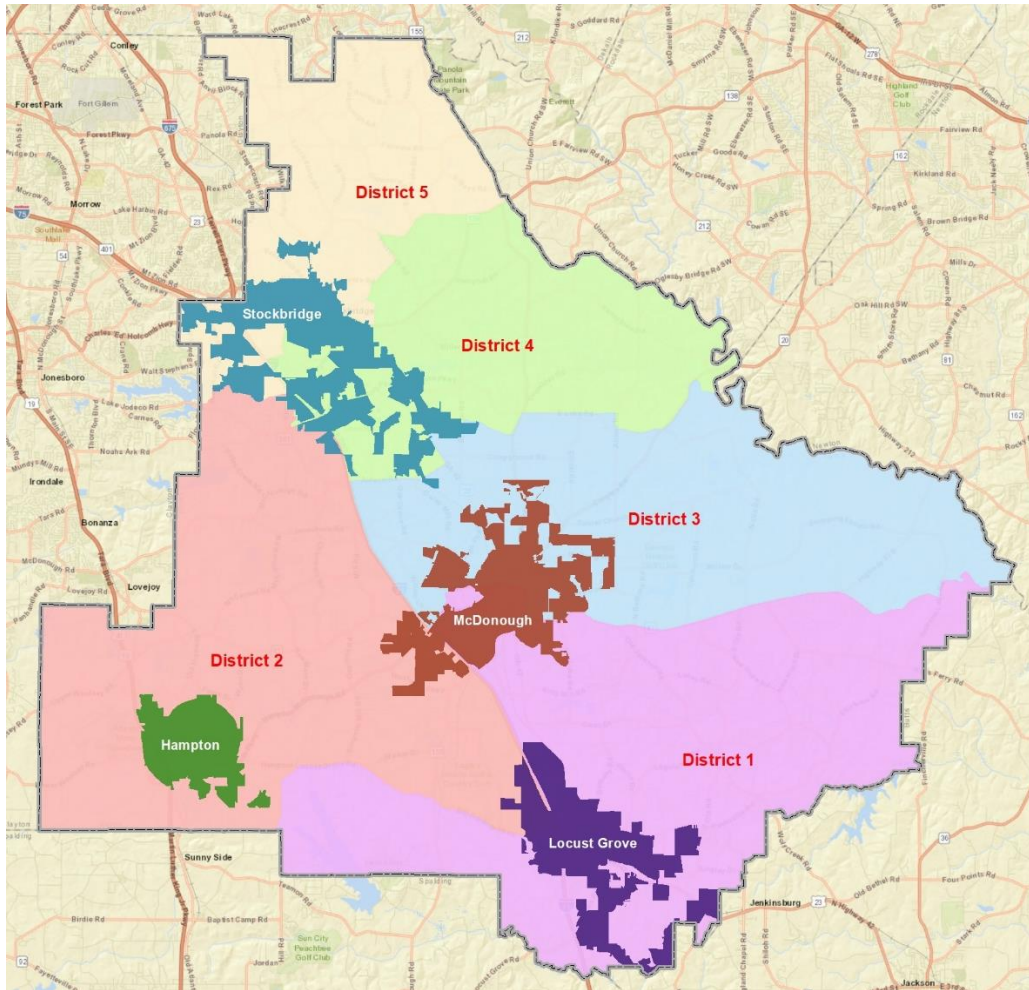


# Transportation Advisory Group Member List

- |                      |                                    |
|----------------------|------------------------------------|
| 1. James Risher      | Chair, Henry County                |
| 2. Herman Ryan       | Henry County Commission District 1 |
| 3. Bill Swift        | Henry County Commission District 2 |
| 4. Wayne Smith       | Henry County Commission District 3 |
| 5. J.T. Williams     | Henry County Commission District 4 |
| 6. LaKeshia Clements | Henry County Commission District 5 |
| 7. Vacant            | City of Stockbridge                |
| 8. Vacant            | City of McDonough                  |
| 9. Vacant            | City of Locust Grove               |
| 10. Vacant           | City of Hampton                    |



As of December 8, 2020